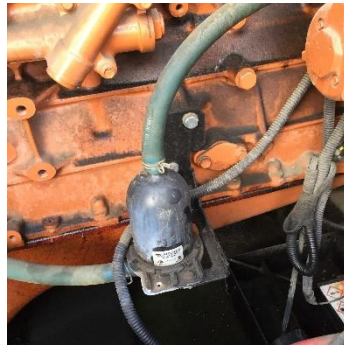


## Check the coolant heater and hoses

All automatic generators require a heater to insure a reliable start. Using an infrared temp gun, the technician should check and record the engine block temperature to make sure the coolant heater is working.

There is usually a hose that carries the heated coolant to the engine. This can reach temperatures of over 150 degrees. That high temperature is damaging to heater hoses. Make sure this hose is not cracked or hard.

Your heater looks something like this.



When it is running it will be hot. **Don't touch it!**

It will sound like a coffee pot perking.

If it's cold check the power supply. Make sure the outlet it is plugged into is energized. Check the breaker.

Code requires receptacles located outside be GFI. (Ground Fault Interruptible) Make sure the GFI is not tripped. Coolant heaters do not get along well with GFI receptacles.