

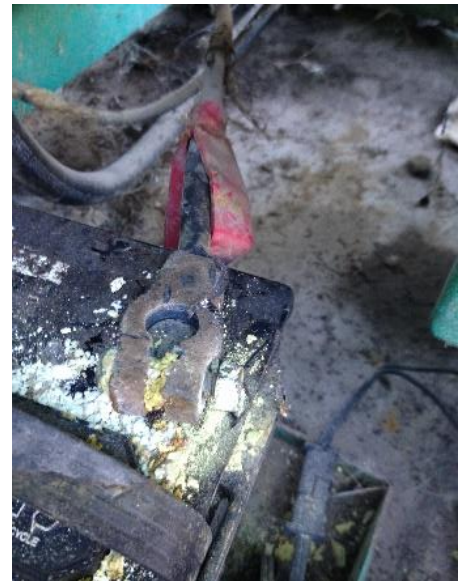
## Clean and Tighten Battery Cable Terminals

Battery terminal ends deteriorate causing battery failure and engine failure. It is a simple matter to clean, tighten, and replace these ends.

This should be done at every service. Request your service company technician attend to this.

If not attended to, this is a sure-fire service call at your expense. Terminal ends will fail. Service companies love expensive service calls in the middle of the night.

A failure waiting to happen



Incorrect terminal end. It should be crimped directly onto the cable. This method allows for a poor connection and two places for corrosion to develop.



All information expressed by Standby Power Solutions, LLC or its officers is strictly the opinion of Standby Power Solutions, LLC.

Standby Power Solutions, LLC disclaims any liability for any personal injury, property, or other damages of any nature whatsoever, whether special, indirect, consequential, or compensatory directly or indirectly resulting from the publication, use of, or reliance on this website or any information derived thereof. Standby Power Solutions, LLC also makes no guaranty or warranty as to the accuracy or completeness of any information contained herein. Anyone using this website should rely on his or her own independent judgment, or as appropriate, seek the advice of a competent professional in determining the exercise of reasonable care in any given circumstances. ©2020 by Standby Power Solutions, LLC. All rights reserved. Do not reproduce without express written permission.